



# Master of Rehabilitation Counseling



COLLEGE OF HEALTH SCIENCES

CHS.UTEP.EDU/MRC

## Admission Requirements

- Bachelor's degree with a minimum 3.0 GPA
- Three confidential recommendations
- Official GRE scores
- Official transcripts from all universities/ colleges attended
- Brief statement of purpose

## Application Process

- Applications must be submitted online through the UTEP Graduate School
- Please check the department website for application deadlines

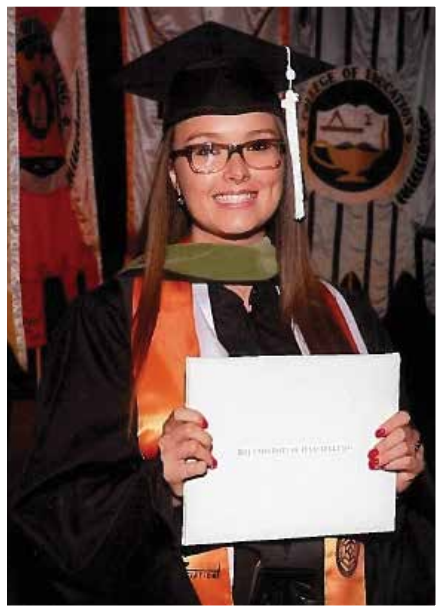
### Masters of Rehabilitation Counseling Program

The University of Texas at El Paso  
Campbell Building  
1101 N. Campbell  
El Paso, TX 79902

chs.utep.edu/mrc  
(915) 747-7233  
Email: rehabcounseling@utep.edu

### Mailing address:

University of Texas at El Paso  
Rehabilitation Counseling  
500 West University Ave.  
El Paso, TX 79968



### Kacy Gainor, MRC '14

Vocational Rehabilitation Counselor,  
DARS/Division for Rehabilitation Services,  
El Paso Field Headquarters

*"My time in the MRC program at UTEP prepared me for my professional career as a counselor. In particular, the vocational rehabilitation process course allowed me to understand the legislative aspects of my profession and why it should be mandated so that individuals with disabilities can gain access to the services they need to lead quality lives."*

### The UTEP MRC Program is accredited by:

Council on Rehabilitation Education  
1699 E. Woodfield Road, Ste. 300  
Shaumburg, IL 60173  
www.core-rehab.org  
(874) 944-1345



The University of Texas at El Paso  
www.utep.edu



## Pick UTEP

- ✦ **Quality of Life** - located in the U.S. - Mexico border city of El Paso, Texas, which is ranked among the safest cities of its size and which offers opportunities for year-round outdoor activities
- ✦ **Diversity** - the country's only doctoral research intensive university with a majority Mexican-American student body, supported by a highly diverse faculty - over 50% within the College of Health Sciences
- ✦ **Strategic Location** - border locale facilitates engagement in health disparities and border health research and practice, making graduates attractive to organizations serving the changing U.S. demographic

## Consider this Degree

**Change Lives** - Rehabilitation counselors assist people with cognitive, psychiatric, intellectual, sensory and physical disabilities to achieve their personal, career, and independent living goals in the most integrated setting possible.

**Job Security** - Bureau of Labor and Statistics estimates a **20% increase in demand** (2012 to 2022) for rehabilitation counselors. Locally, Workforce Solutions Borderplex predicts a similar growth in employment.

## Fast Fact

The UTEP Miner Pick can be traced back to the first unofficial seal in 1919. It symbolizes the power to break new ground, the persistence to discover the unthinkable and the promise to enrich the future.



## On the Forefront of Graduate Education

- 700 clinical rotation hours with opportunities for paid placements and stipends
- 100% passing rates on comprehensive exams
- Close to 100% placement rate for graduates; many students are hired during internships

## Your Future - Our Mission

- Time to Completion: 54 credit hours - 2 years with full-time study
- Licensure Requirements: Graduates sit for Certified Rehabilitation Counselor exam. Licensure requirements vary by state.

## Dollars and Sense

- UTEP's tuition rate is consistently lower than the national average
- Consider financing with low-interest rate federal loans
- Competitive research assistantships and fellowships available